



PER MONTH

**£5,000 Per Month**

**Elcot Avenue**

London, SE15 1QD

**GARETH  
JAMES**

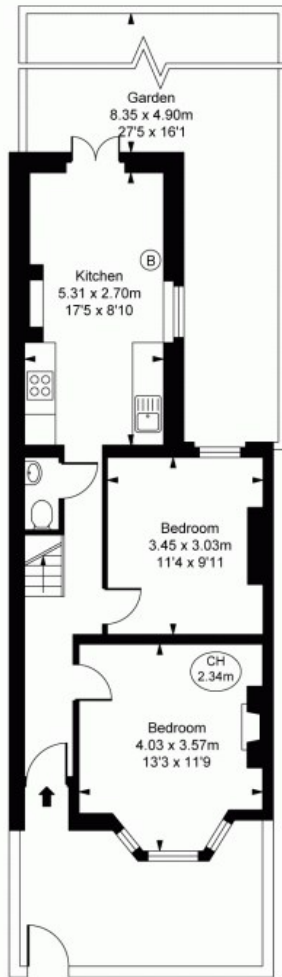


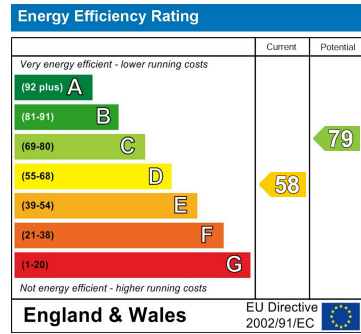
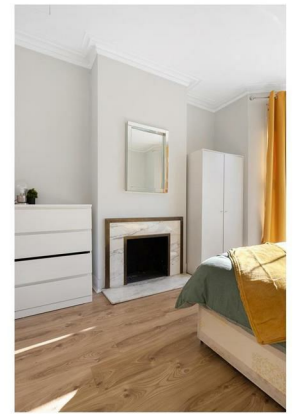
ILLUSTRATION FOR IDENTIFICATION PURPOSES ONLY  
ALL MEASUREMENTS ARE MAXIMUM, AND INCLUDE WINDOW BAYS AND WARDROBES WHERE APPLICABLE  
THIS PLAN MUST NOT BE REPRODUCED BY ANY OTHER PERSON WITHOUT PERMISSION

Elcott Avenue, SE15  
Approximate Gross Internal Area  
94.93 sq m / 1,022 sq ft  
( CH = Ceiling Heights )



First Floor  
Approximate Gross Internal Area  
47.45 sq m / 511 sq ft

Ground Floor  
Approximate Gross Internal Area  
47.48 sq m / 511 sq ft



Agents Note: Whilst every care has been taken to prepare these particulars, they are for guidance purposes only. All measurements are approximate and are for general guidance purposes only and whilst every care has been taken to ensure their accuracy, they should not be relied upon and potential buyers/tenants are advised to recheck the measurements

**GARETH  
JAMES**

OFFICE ADDRESS  
129 Bellenden Road  
London  
SE15 4QY

OFFICE DETAILS